



ARIA MARİN

[www.ariamarin.com](http://www.ariamarin.com)

+9 0533 275 32 23

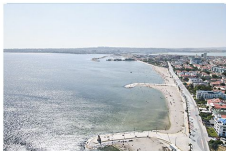


ARIA MARİN

*Buyukcekmece*



YACHT MARINA



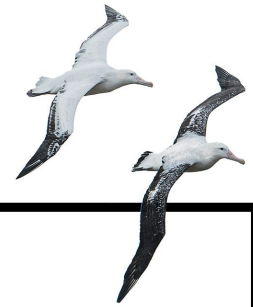
BUYUKCEKMECE SEASIDE



SEA BUS











BUYUKCEKMECE BEACH



**Buyukcekmece is one of the favorite districts of Istanbul with its beautiful coast and beaches located on the west of Istanbul, on the shores of the Marmara Sea...**

*Buyukcekmece*

# LOCATION

	<b>BUYUKCEKMECE BEACH</b>	<b>2 MINUTE</b>
	<b>KIYI ISTANBUL MARINA</b>	<b>6 MINUTE</b>
	<b>KOLON HOSPİTAL</b>	<b>3 MINUTE</b>
	<b>ATIRUS MALL</b>	<b>4 MINUTE</b>
	<b>BUYUKCEKMECE SEA BUS</b>	<b>6 MINUTE</b>
	<b>METROBUS</b>	<b>8 MINUTE</b>
	<b>PERLAVISTA MALL</b>	<b>10 MINUTE</b>
	<b>İSTANBUL AIRPORT</b>	<b>35 MINUTE</b>

*Buyukcekmece*

## OUR PROJECTS

- |                   |              |
|-------------------|--------------|
| 1 ASIL COMFORT 1  | 5 SEA LIFE   |
| 2 ASIL COMFORT 2  | 6 SEA MARIN  |
| 3 ALBATROS LIFE 1 | 7 ASIL MARIN |
| 4 ALBATROS LIFE 2 | 8 ASIL LIFE  |



ISTANBUL  
AIRPORT



30 MINUTES TO

ARIA MARIN



Ease of Access to Public  
Spaces...



**Buyukcekmece offers extraordinary opportunities to both the people of the city and the holidaymakers with its magnificent view and facilities ...**

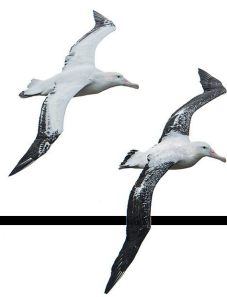
*Buyukcekmece*

7

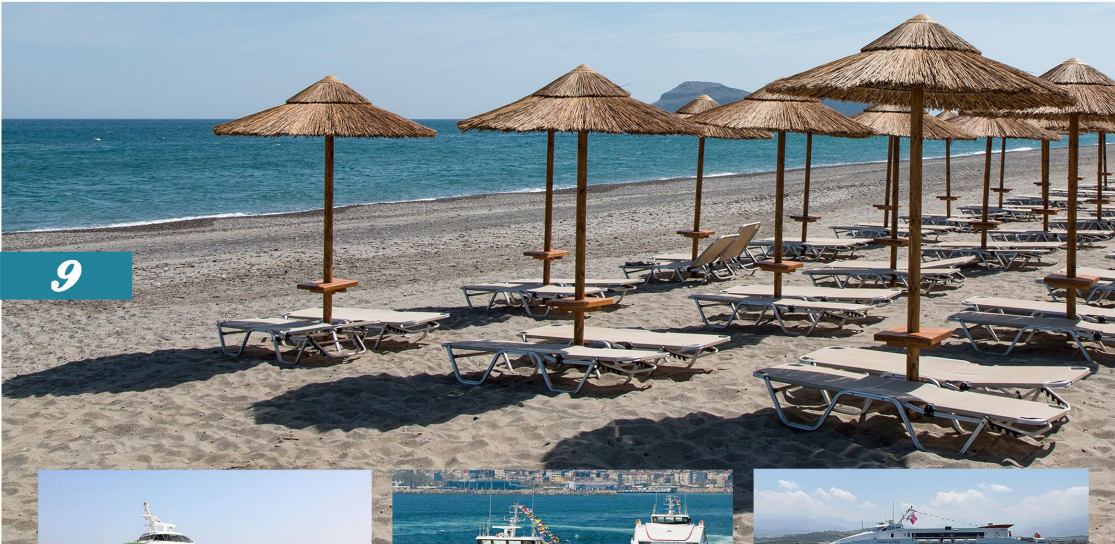
**Nature in Buyukcekmece is not a detail,  
it is the center of life .**

**Places where you will increase your quality  
with playgrounds , walking areas.**

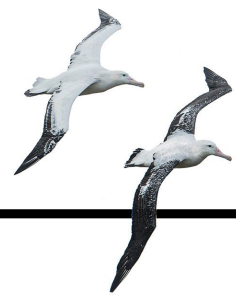
*Beach - Yatch Marina*



8



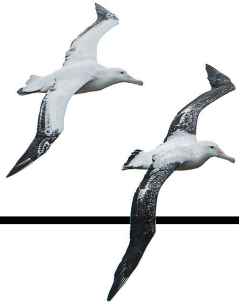
9



**Discover the world of privileges that will take you to your dreams while sipping your coffee with its peaceful and calm atmosphere.**

10

*Beach-Sea Transportation*



**Calm and safe living spaces where  
the residents of Aria Marin will feel privileged,  
where luxury meets the landscape.**

  
ARIA MARIN

11

Buyukcekmece's  
Most Ambitious Project

12





**Aria Marin is designed for you to experience maximum comfort in perfect integrity with a construction area of 7.800 m<sup>2</sup> on an area of 24.000 m<sup>2</sup>. The complex of 260 apartmants in 12 blocks.**

  
ARIA MARIN





**Aria Marin,  
it emphasizes simplicity and minimalism  
with its white and plain exterior.**

  
ARIA MARIN





**You can have an energetic, dynamic and fit life  
by inhaling Aria Marin's clean air ...**

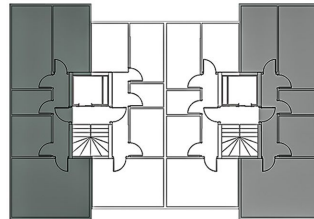
  
ARIA MARIN

## A-B BLOK NORMAL KAT DAİRE PLANI (A-B BLOCK STANDARD FLOOR FLAT PLAN)

1	ANTRE (ENTREE)	6,75 m <sup>2</sup>
2	SALON (LIVING ROOM)	23,40 m <sup>2</sup>
3	MUTFAK (KITCHEN)	8,30 m <sup>2</sup>
4	YATAK ODASI (BADROOM)	15,90 m <sup>2</sup>

5	YATAK ODASI (BADROOM)	11,85 m <sup>2</sup>
6	BANYO (BATHROOM)	5,30 m <sup>2</sup>
NET (NET) :		71,50 m <sup>2</sup>
BRÜT (GROSS) :		101,50 m <sup>2</sup>

### NORMAL KAT ANAHTAR PLAN (STANDART FLOOR EXAMPLE PLAN)



19



Salon

20

Tip 2

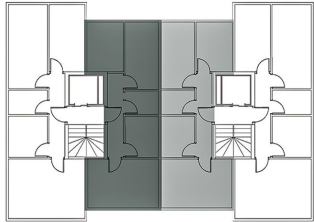
**A-B BLOK NORMAL KAT DAİRE PLANI**  
(A-B BLOCK STANDARD FLOOR FLAT PLAN)

1	ANTRE (ENTREE)	7,65 m <sup>2</sup>	5	YATAK ODASI (BADROOM)	9,20 m <sup>2</sup>
2	SALON + MUTFAK (LIVING ROOM)	27,30 m <sup>2</sup>	6	BANYO (BATHROOM)	4,70 m <sup>2</sup>
4	YATAK ODASI (BADROOM)	12,05 m <sup>2</sup>			

NET (NET) : 60,90 m<sup>2</sup>  
BRÜT (GROSS): 90,20 m<sup>2</sup>

21

**NORMAL KAT ANAHTAR PLAN**  
(STANDART FLOOR EXAMPLE PLAN)



  
ARIA MARİN



22



*Mutfak*

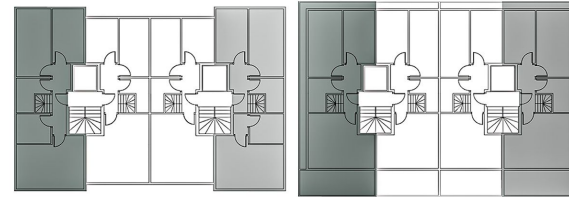


*Antre*

## A-B BLOK DUBLEKS DAİRE PLANI (A-B BLOCK DUPLEX FLAT PLAN)

1	ANTRE (ENTREE)	8.45 m <sup>2</sup>	9	TERAS (TERRACE)	13.85 m <sup>2</sup>
2	SALON (LIVING ROOM)	22.60 m <sup>2</sup>	10	YATAK ODASI (BADROOM)	15.90 m <sup>2</sup>
3	MUTFAK (KITCHEN)	8.20 m <sup>2</sup>	11	YATAK ODASI (BADROOM)	11.85 m <sup>2</sup>
4	YATAK ODASI (BADROOM)	15.90 m <sup>2</sup>	12	BANYO	5.35 m <sup>2</sup>
5	YATAK ODASI (BADROOM)	11,85 m <sup>2</sup>			NET: 149.90 m <sup>2</sup>
6	BANYO ( BATHROOM)	5.35 m <sup>2</sup>			BRÜT: 195.75 m <sup>2</sup>
7	HOL (HALL)	8.45 m <sup>2</sup>			
8	ÇATI ARASI (ROOF ROOM)	22.15m <sup>2</sup>			

## DUBLEKS ANAHTAR PLAN (DUPLEX FLOOR EXAMPLE PLAN)



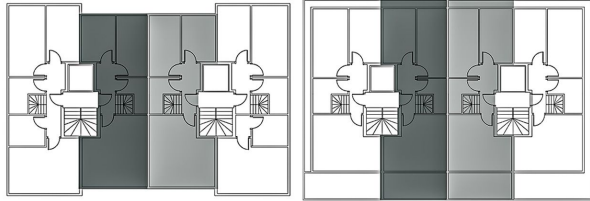
## A-B BLOK DUBLEKS DAİRE PLANI (A-B BLOCK DUPLEX FLAT PLAN)

1	ANTRE (ENTREE)	6.60 m <sup>2</sup>	9	YATAK ODASI (BADROOM)	14.70 m <sup>2</sup>
2	SALON + MUTFAK (LIVING ROOM)	26.30 m <sup>2</sup>	10	YATAK ODASI (BADROOM)	12.10 m <sup>2</sup>
3	YATAK ODASI (BADROOM)	11.05 m <sup>2</sup>	11	BANYO ( BATHROOM)	4.25 m <sup>2</sup>
4	YATAK ODASI (BADROOM)	9.20 m <sup>2</sup>			
5	BANYO ( BATHROOM)	4.25 m <sup>2</sup>			
6	HOL (HALL)	6.60 m <sup>2</sup>			
7	ÇATI ARASI (ROOF ROOM)	22.35 m <sup>2</sup>			
8	TERAS (TERRACE)	10.75 m <sup>2</sup>			

NET (NET) : 128.15 m<sup>2</sup>  
BRÜT (GROSS): 165.15 m<sup>2</sup>

25

### DUBLEKS ANAHTAR PLAN (DUPLEX FLOOR EXAMPLE PLAN)



ARIA MARİN

Tip 4



Yatak Odası

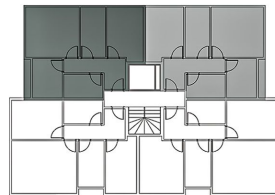
## C-D BLOK NORMAL KAT DAIRE PLANI (C-D BLOCK STANDARD FLOOR FLAT PLAN)

1	ANTRE (ENTREE)	6,25 m <sup>2</sup>
2	SALON + MUTFAK (LIVING ROOM)	25,40 m <sup>2</sup>
3	YATAK ODASI (BEDROOM)	13,60 m <sup>2</sup>
4	YATAK ODASI (BEDROOM)	9,30 m <sup>2</sup>
5	BANYO (BATHROOM)	4,40 m <sup>2</sup>
6	BALKON (BALCONY)	2,50 m <sup>2</sup>

NET (NET) : 61,45 m<sup>2</sup>

BRÜT (GROSS): 90,35 m<sup>2</sup>

### NORMAL KAT ANAHTAR PLAN (STANDART FLOOR EXAMPLE PLAN)



**C-D BLOK DUBLEKS DAİRE PLANI**  
(C-D BLOCK DUPLEX FLAT PLAN)

1	ANTRE (ENTREE)	9,55 m <sup>2</sup>	7	ANTRE (ENTREE)	9,55 m <sup>2</sup>
2	SALON + MUTFAK (LIVING ROOM)	24,20 m <sup>2</sup>	8	ÇATI ARASI (ROOF ROOM)	22,30 m <sup>2</sup>
3	YATAK ODASI (BADROOM)	13,60 m <sup>2</sup>	9	TERAS (TERRACE)	15,20 m <sup>2</sup>
4	YATAK ODASI (BADROOM)	8,80 m <sup>2</sup>	10	YATAK ODASI (BADROOM)	13,60m <sup>2</sup>
5	BANYO (BATHROOM)	3,50 m <sup>2</sup>	11	YATAK ODASI (BADROOM)	8,80 m <sup>2</sup>
6	BALKON (BALCONY)	2,50 m <sup>2</sup>	12	BANYO (BATHROOM)	3,50 m <sup>2</sup>

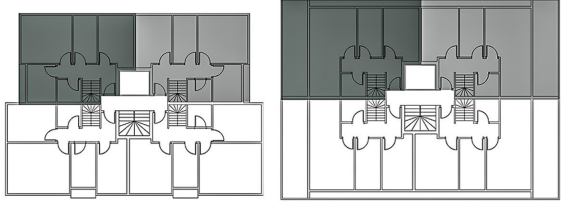
NET (NET) : 135,10 m<sup>2</sup>

BRÜT (GROSS): 175,20 m<sup>2</sup>



29

**DUBLEKS ANAHTAR PLAN**  
(DUPLEX FLOOR EXAMPLE PLAN)



30







31

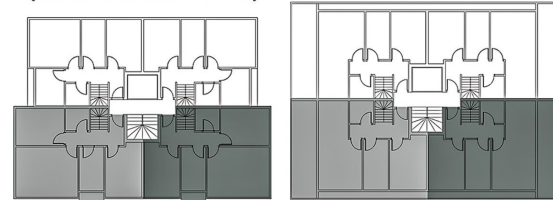
*Çocuk Odası*



### C-D BLOK DUBLEKS DAİRE PLANI (C-D BLOCK DUPLEX FLAT PLAN)

1	ANTRE (ENTREE)	9,35 m <sup>2</sup>	8	ANTRE (ENTREE)	9,35 m <sup>2</sup>
2	SALON (LIVING ROOM)	23,25 m <sup>2</sup>	9	ÇATI ARASI (ROOF ROOM)	22,60 m <sup>2</sup>
3	MUTFAK (KITCHEN)	8,10 m <sup>2</sup>	10	TERAS (TERRACE)	15,60 m <sup>2</sup>
4	YATAK ODASI (BADROOM)	14,20 m <sup>2</sup>	11	YATAK ODASI (BADROOM)	14,20 m <sup>2</sup>
5	YATAK ODASI (BADROOM)	12,70 m <sup>2</sup>	12	YATAK ODASI (BADROOM)	9,10 m <sup>2</sup>
6	BANYO (BATHROOM)	4,50 m <sup>2</sup>	12	BANYO (BATHROOM)	3,50 m <sup>2</sup>
7	BALKON (BALCONY)	2,50 m <sup>2</sup>			
				NET (NET) :	148,95m <sup>2</sup>
				BRÜT (GROSS):	185,95m <sup>2</sup>

### DUBLEKS ANAHTAR PLAN (DUPLEX FLOOR EXAMPLE PLAN)



*Tip 3*



32

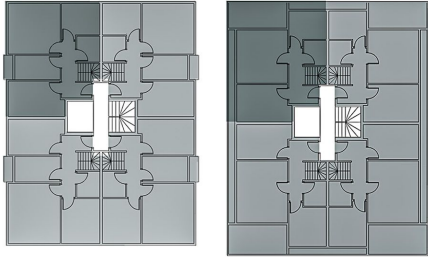


## E BLOK DUBLEKS DAİRE PLANI (E BLOCK DUPLEX FLAT PLAN)

1	ANTRE (ENTREE)	9.45 m <sup>2</sup>	8	HOL (HALL)	9.55 m <sup>2</sup>
2	SALON (LIVING ROOM)	21.00 m <sup>2</sup>	9	ÇATI ARASI (ROOF ROOM)	20.20 m <sup>2</sup>
3	MUTFAK ( KITCHEN)	8.75 m <sup>2</sup>	10	TERAS (TERRACE)	10.30 m <sup>2</sup>
4	YATAK ODASI (BADROOM)	13.60 m <sup>2</sup>	11	YATAK ODASI (BADROOM)	13.60 m <sup>2</sup>
5	YATAK ODASI (BADROOM)	8.40 m <sup>2</sup>	12	YATAK ODASI (BADROOM)	8.40 m <sup>2</sup>
6	BANYO (BATHROOM)	3.65 m <sup>2</sup>	13	BANYO (BATHROOM)	3.60 m <sup>2</sup>
7	BALKON (BALCONY)	2.35 m <sup>2</sup>			
					NET (NET) : 132.85 m <sup>2</sup>
					BRÜT (GROSS): 165.85 m <sup>2</sup>

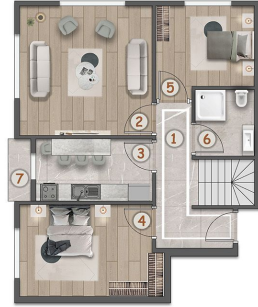
33

### DUBLEKS ANAHTAR PLAN (DUPLEX FLOOR EXAMPLE PLAN)



  
ARIA MARIN

Tip 1



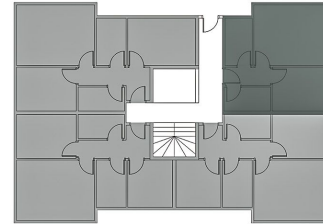
Banyo

34

## F 6 H I İ BLOK ZEMİN KAT DAİRE PLANI (F 6 H I İ BLOCK GROUND FLOOR FLAT PLAN)

1	ANTRE (ENTREE)	5,30 m <sup>2</sup>
2	SALON (LIVING ROOM)	21,50 m <sup>2</sup>
3	MUTFAK ( KITCHEN)	6,10 m <sup>2</sup>
4	YATAK ODASI (BADROOM)	10,50 m <sup>2</sup>
5	BANYO (BATHROOM)	3,75 m <sup>2</sup>
NET (NET) :		47,15m <sup>2</sup>
BRÜT (GROSS):		76,45 m <sup>2</sup>

### ZEMİN KAT ANAHTAR PLAN (GROUND FLOOR EXAMPLE PLAN)



Yatak Odası

F 6 H I İ BLOK ZEMİN KAT DAİRE PLANI  
(F 6 H I İ BLOCK GROUND FLOOR FLAT PLAN)

Tip 2

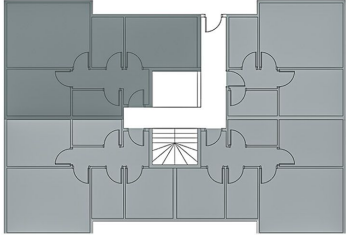
1	ANTRE (ENTREE)	6,10 m <sup>2</sup>
2	SALON (LIVING ROOM)	21,50 m <sup>2</sup>
3	MUTFAK (KITCHEN)	6,10 m <sup>2</sup>
4	YATAK ODASI (BADROOM)	12,80 m <sup>2</sup>
5	YATAK ODASI (BADROOM)	12,50 m <sup>2</sup>
6	BANYO (BATHROOM)	3,75 m <sup>2</sup>

NET (NET) : 62,75 m<sup>2</sup>

BRÜT (GROSS): 92,05 m<sup>2</sup>

37

ZEMİN KAT ANAHTAR PLAN  
(GROUND FLOOR EXAMPLE PLAN)



ARIA MARİN



Salon

38



39



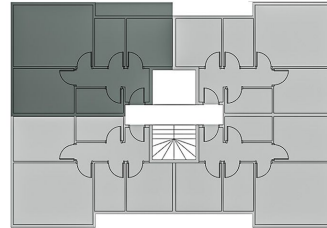
Yatak Odası

## F G H I İ BLOK NORMAL KAT DAİRE PLANI (F G H I İ BLOCK STANDARD FLOOR FLAT PLAN)

1	ANTRE (ENTREE)	6,10 m <sup>2</sup>
2	SALON (LIVING ROOM)	21,50 m <sup>2</sup>
3	MUTFAK ( KITCHEN)	6,10 m <sup>2</sup>
4	YATAK ODASI (BADROOM)	12,80 m <sup>2</sup>
5	YATAK ODASI (BADROOM)	10,50 m <sup>2</sup>
6	BANYO (BATHROOM)	3,75 m <sup>2</sup>

NET (NET ) : 60,75 m<sup>2</sup>  
BRÜT (GROSS): 90,05 m<sup>2</sup>

### NORMAL KAT ANAHTAR PLAN (STANDART FLOOR EXAMPLE PLAN)



Tip 3



40

ARIA MARİN

## F G H I İ BLOK DUBLEKS DAİRE PLANI (F G H I İ BLOCK DUPLEX FLAT PLAN)

1	ANTRE (ENTREE)	8.20 m <sup>2</sup>	7	HOL (HALL)	8.20 m <sup>2</sup>
2	SALON (LIVING ROOM)	21.50 m <sup>2</sup>	8	ÇATI ARASI (ROOF ROOM)	20.60 m <sup>2</sup>
3	MUTFAK ( KITCHEN)	6.10 m <sup>2</sup>	9	TERAS (TERRACE)	10.45 m <sup>2</sup>
4	YATAK ODASI (BADROOM)	10.35 m <sup>2</sup>	10	YATAK ODASI (BADROOM)	13.75 m <sup>2</sup>
5	YATAK ODASI (BADROOM)	10.30 m <sup>2</sup>	11	YATAK ODASI (BADROOM)	9.00 m <sup>2</sup>
6	BANYO (BATHROOM)	3.50 m <sup>2</sup>	12	BANYO (BATHROOM)	3.50 m <sup>2</sup>

NET (NET) : 125.45 m<sup>2</sup>

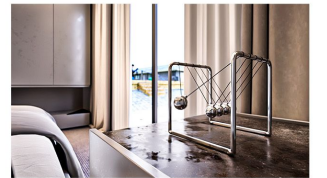
BRÜT (GROSS): 162.15 m<sup>2</sup>



*Tip 4*

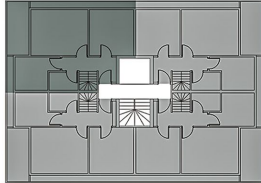
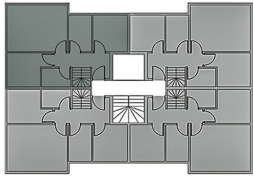


*Salon + Mutfak*



**44**

### DUBLEKS ANAHTAR PLAN (DUPLEX FLOOR EXAMPLE PLAN)

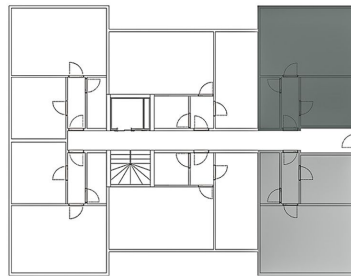


**ARIA MARİN**

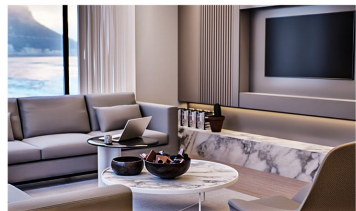
## K- J BLOK ZEMİN KAT DAİRE PLANI (K-J BLOCK GROUND FLOOR FLAT PLAN)

1	ANTRE (ENTREE)	4,45 m <sup>2</sup>
2	SALON + MUTFAK (LIVING ROOM)	27,35 m <sup>2</sup>
3	YATAK ODASI (BEDROOM)	12,05 m <sup>2</sup>
4	BANYO (BATHROOM)	3,05 m <sup>2</sup>
NET (NET) :		46,80 m <sup>2</sup>
BRÜT (GROSS):		75,90 m <sup>2</sup>

### ZEMİN KAT ANAHTAR PLAN (GROUND FLOOR EXAMPLE PLAN)



*Salon*



## K- J BLOK NORMAL KAT DAİRE PLANI (K-J BLOCK STANDARD FLOOR FLAT PLAN)

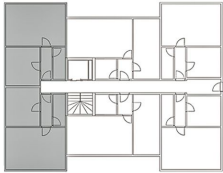
Tip 2

1	ANTRE (ENTREE)	4,45 m <sup>2</sup>
2	SALON + MUTFAK (LIVING ROOM)	27,35 m <sup>2</sup>
3	YATAK ODASI (BADROOM)	14,90 m <sup>2</sup>
4	BANYO (BATHROOM)	4,05 m <sup>2</sup>
NET (NET) :		49,75 m <sup>2</sup>
BRÜT (GROSS):		79,75 m <sup>2</sup>

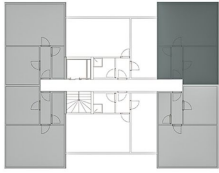


45

ZEMİN KAT ANAHTAR PLAN  
(GROUND FLOOR EXAMPLE PLAN)



NORMAL KAT ANAHTAR PLAN  
(STANDART FLOOR EXAMPLE PLAN)



ARIA MARİN



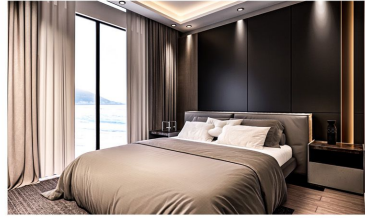
46

Banyo





47



Yatak Odası

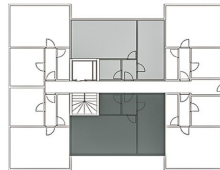
K- J BLOK NORMAL KAT DAİRE  
(C-D BLOCK STANDARD FLOOR FLAT PLAN)

1	ANTRE (ENTREE)	2,90 m <sup>2</sup>
2	SALON + MUTFAK (LIVING ROOM)	27,80 m <sup>2</sup>
3	YATAK ODASI (BADROOM)	15,45 m <sup>2</sup>
4	BANYO (BATHROOM)	4,20 m <sup>2</sup>
NET (NET) :		50,35 m <sup>2</sup>
BRÜT (GROSS):		80,00 m <sup>2</sup>

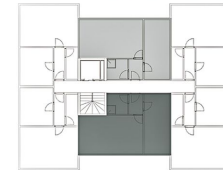


48

ZEMİN KAT ANAHTAR PLAN  
(GROUND FLOOR EXAMPLE PLAN)



NORMAL KAT ANAHTAR PLAN  
(STANDART FLOOR EXAMPLE PLAN)



## K- J BLOK DUBLEKS KAT DAİRE PLANI (K-J BLOCK DUPLEX FLOOR FLAT PLAN)

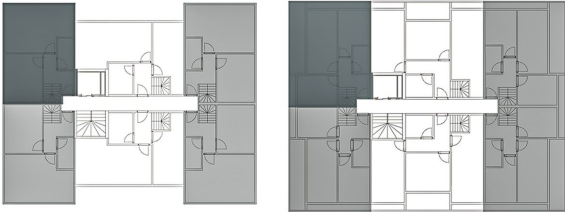
1	ANTRE (ENTREE)	5,00 m <sup>2</sup>	7	YATAK ODASI (BADROOM)	13,25 m <sup>2</sup>
2	SALON + MUTFAK (LIVING ROOM)	21,65 m <sup>2</sup>	8	TERAS (TERRACE)	7,50 m <sup>2</sup>
3	YATAK ODASI (BADROOM)	12,80 m <sup>2</sup>	9	YATAK ODASI (BADROOM)	8,60 m <sup>2</sup>
4	BANYO (BATHROOM)	3,50 m <sup>2</sup>	10	BANYO (BATHROOM)	3,50 m <sup>2</sup>
5	HOL (HALL)	5,00 m <sup>2</sup>			
6	YATAK ODASI (BADROOM)	8,15 m <sup>2</sup>			
		NET (NET) :	88,95 m <sup>2</sup>		
		BRÜT (GROSS):	113,95 m <sup>2</sup>		

*Tip 4*



**49**

### DUBLEKS ANAHTAR PLAN (DUPLEX EXAMPLE PLAN)



**ARIA MARİN**

**50**

*Antre*

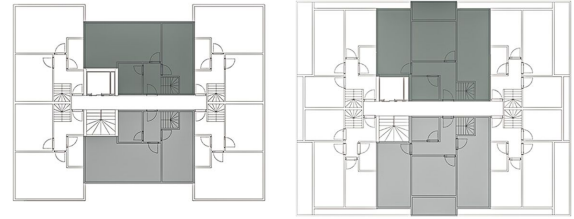
**K- J BLOK DUBLEKS KAT DAİRE PLANI**  
(K-J BLOCK DUPLEX FLOOR FLAT PLAN)

1	ANTRE (ENTREE)	6,00 m <sup>2</sup>	7	YATAK ODASI (BADROOM)	11,90 m <sup>2</sup>
2	SALON + MUTFAK (LIVING ROOM)	25,45 m <sup>2</sup>	8	TERAS (TERRACE)	8,45 m <sup>2</sup>
3	YATAK ODASI (BADROOM)	13,25 m <sup>2</sup>	9	YATAK ODASI (BADROOM)	14,25 m <sup>2</sup>
4	BANYO (BATHROOM)	5,30 m <sup>2</sup>	10	BANYO (BATHROOM)	4,30 m <sup>2</sup>
5	HOL (HALL)	8,75 m <sup>2</sup>			
6	YATAK ODASI (BADROOM)	17,00 m <sup>2</sup>			

NET (NET) : 114,65 m<sup>2</sup>  
BRÜT (GROSS): 145,25 m<sup>2</sup>



**DUBLEKS ANAHTAR PLAN**  
(DUPLEX EXAMPLE PLAN)

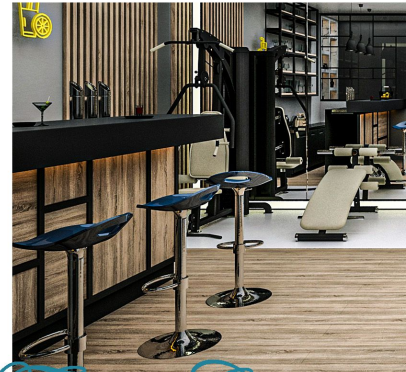


Salon

53

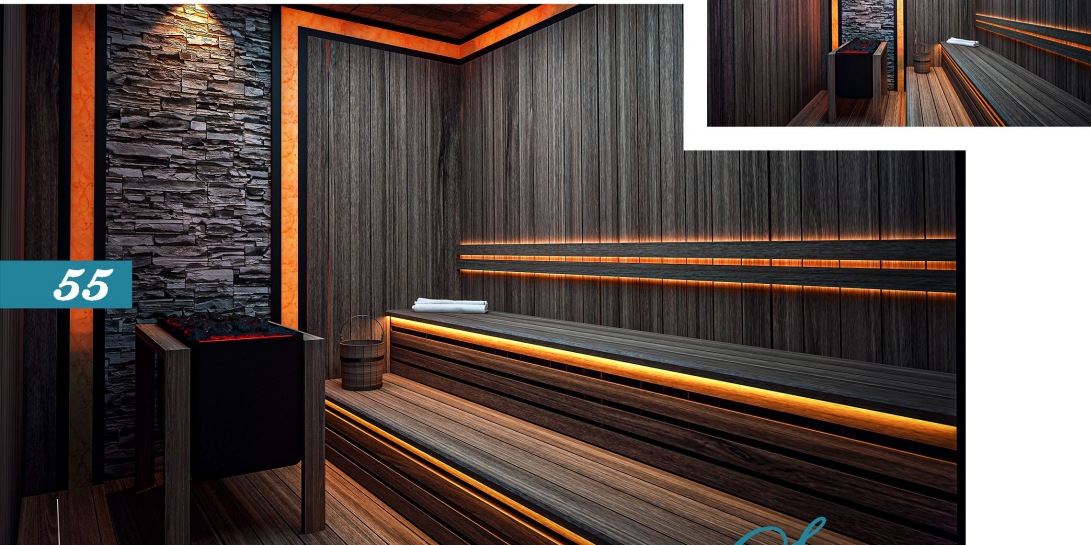
**Aria Marin,  
It offers large-scale fitness room, Turkish bath,  
sauna and many opportunities together  
with its commercial areas.**

  
ARIA MARIN



*Fitness Centre*

54



55

*Sauna*

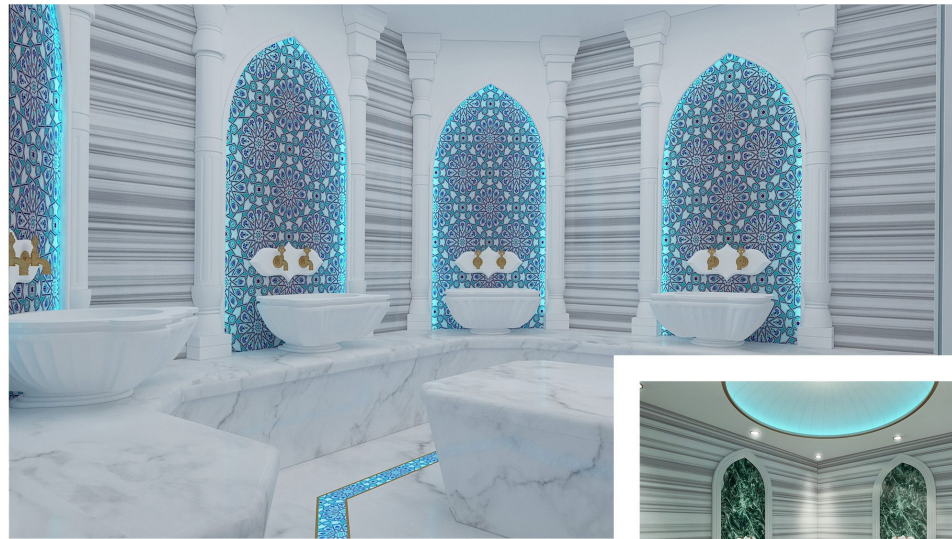
**Aria Marin,  
It is your greatest right to take  
advantage of its privileges.**

  
ARIA MARIN

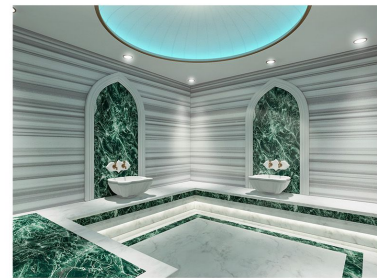
56

We offer you areas where you will  
feel special.

  
ARIA MARIN



*Turkish Bath*





*Cinema Room*

**You will be able to spend a pleasant time  
and enjoy the areas where you can socialize.**

  
ARIA MARIN

61

**Your safety is our priority  
high standard indoor parking areas.**

  
ARIA MARIN



*Parking*





63



**You are at the right place for a peaceful  
life in the city, out of the crowd.**

  
ARIA MARIN

64